

▲ FINNISH AND SWEDISH LANGUAGE PATHWAY PROGRAM

Your gateway to Nordic Higher Education Organized by Not a Bad Idea



A stress-free start and a realistic dream

For many young people - and their parents - preparing for studies abroad can feel overwhelming. Questions about language skills, cultural adaptation, safety and study readiness often cause stress.

What if you could prepare safely and affordably before even leaving your country?

Learn the language, understand Nordic study culture, and gain confidence - step by step. That's what the Finnish and Swedish language pathway program provides.

An online bridge to world-class education in Finland and Sweden

Two of the safest, most innovative, and education-focused countries in the world.

Program goal

The program helps upper secondary graduates prepare for higher education in Finland or Sweden by achieving **A2.2 level (CEFR) proficiency in Finnish or Swedish**. It also builds academic study skills, online learning readiness, and intercultural understanding - key elements for success in Nordic Universities.

This course provides a **solid foundation for further university-level language studies (B1-B2)** and supports applicants aiming for English-language international programs.

Participants receive a Certificate of Completion from Not a Bad Idea.

Program structure and hours

- Mode: 100% Online
- Weekly schedule: 3 x 75min of live lessons per week
- Teaching hours: One course (module) = 37,5 hours / Five courses total = 188 hours
Structure: Five sub-courses (modules), each ending with a mid-term evaluation and feedback final evaluation at program end
- Guided independent study: Full group sessions, small group discussion, interactive
- Orientation module: Includes digital learning skills and technical guidance for online participants
- Limited group size, **only 14-20 students will be accepted.**
- Next start: End of September 2026 (Rwanda)
- Estimated end: April/May 2027
- After the program, you are prepared to:
 - Apply to university level-studies in Finland
 - Succeed in international academic environments
 - Integrate into Finnish working life



info@notabadidea.fi | www.notabadidea.fi





Why Finland and why Sweden



Finland - innovative and inclusive

- Officially bilingual (Finnish and Swedish). Most universities operate in Finnish; a few in Swedish (e.g Åbo Akademi University, Hanken School of Economics)
- Globally known for high-quality education, equality, and research-based learning
- Safe, student-friendly, and supportive environment
- Affordable student meals (3-4 €) and extensive student healthcare (YTHS)

Sweden - creative and globally connected

- Knowledge of Swedish enhances Nordic career mobility
- Open academic culture that values dialogue and collaboration
- Strong student welfare and healthcare systems

Why this program

This is not just a language course

- Finnish language training + Academic study skills
- Working life readiness + Cultural preparation
- Step-by-step application guidance



Programme fee

The total program fee includes **all course modules, individual guidance, and the official final certificate.** Please contact local organizer for more details.

This comprehensive program offers participants the opportunity to **strengthen their skills and receive a recognized certificate**, confirming successful completion of the full pathway and readiness for further academic studies.

Program fee 2026: 4800€ (flexible payment options!)

English-language University Admissions

Most international degree programs in Finland and Sweden are taught in English. Applicants are generally required to demonstrate **B2-level English** proficiency through one of the following:

- **IELTS Academic:** Minimum overall band 6.0-6.5 (some programs 7.0)
- **TOEFL iBT:** 80-92 or higher
- **Cambridge English:** B2 First (formerly FCE) or higher
- **Previous English-medium studies:** May be accepted as proof in some cases

Although Finnish or Swedish is not required for admission, universities highly value applicants who:

- show initiative by studying the local language before arrival
- demonstrate readiness to integrate into Nordic society, and
- express motivation to build long-term academic or career paths in Finland and Sweden

Such preparation strengthens motivation letters and interviews - signaling commitment, independence, and adaptability



A2.2 Language Level - What you'll be able to do

At **A2.2 level (CEFR)**, students can communicate in everyday situations, follow simple conversations, and understand short written and spoken messages. This course is designed especially for students who plan to apply for **English-language degree programs** in Finnish or Swedish universities and want to build local language and cultural readiness alongside their academic goals.

English is used as the support language throughout the course, ensuring that students understand all materials and can participate fully while learning Finnish or Swedish.

Speaking and Interaction

- Engage in short, practical conversations related to study and daily life.
- Describe background, plans, and experiences in simple terms.
- Participate in guided dialogues using both the target language and English as needed.

Listening Comprehension

- Understand basic spoken Finnish or Swedish in academic or everyday contexts.
- Follow the main ideas of announcements, videos, and instructions.

Reading Comprehension

- Read short texts, university pages, schedules, and daily messages.
- Identify key information in forms and simple study-related materials.

Writing

- Write short paragraphs, notes, and messages related to everyday or study life.
- Fill in study forms and express opinions in simple written language.

This level provides a strong foundation for further language development (B1–B2), supporting students' integration and everyday communication even when their main degree program is taught in English.



Certificate and Recognition

Finnish language certificate (A0–A2.2)
SKILLOON® Study Skills Certificate
SKILLOON® Working Life Skills Certificate
Program Certificate of Completion issued by Not a Bad Idea.


Applying for University Studies

Students can apply independently by university websites targeted for international students.

See also:

Official information sources:

 Study in Finland / Studyinfo.fi

 Universityadmissions.se

Highlighting local language studies and motivation to integrate in Finland or Sweden enhances applications and demonstrates a proactive attitude valued by universities. **Important! This program prepares you for university applications but does not guarantee admission**



Living Costs and Student Benefits

Although this course is completed online before arrival, students benefit from understanding local living standards and services once they move for studies:

Category	Finland	Sweden
Shared accommodation	€250–400/month	€400–600/month
Single apartment	€700–1,000+	€900–1,300+
Food and daily expenses	€300–400/month	€350–450/month
Estimated total	€800–1,300/month	€900–1,400/month

Living costs vary depending on the city and lifestyle. Helsinki and Stockholm are more expensive; smaller cities are more affordable.



Student benefits

Finland

- Student Health Services (YTHS): comprehensive healthcare at low cost
- Subsidized lunches: campus meals €3–4 nationwide.
- Student housing: low-cost options through student foundations.

Sweden

- Public healthcare access (with EHIC or insurance).
- Student Health Centres supporting well-being and study skills.
- Campus lunches typically €6–9.

Tuition Fees and Scholarships (Examples)

Country

Finland

Typical annual tuition

€8,000 – 20,000
(UAS typically €9,000 – 11,000)

Scholarships

Finland Scholarship (includes a €5,000 relocation grant for some Master's students), and 50–100% tuition fee waivers offered by universities such as the University of Turku, Tampere University, and the University of Eastern Finland.

Sweden

€8,000 - 15,000
(depending on field, some programmes upto €25,000)

Swedish Institute Scholarships for Global Professionals (full tuition + living costs), and 25–100% tuition waivers offered by universities such as Lund University, Karlstad University, and Mid Sweden University.

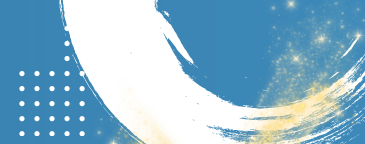
Some scholarships cover tuition fully and may include living cost support.

Highlights

- ▶ 100% online, safe, flexible and affordable
- ▶ Finnish or Swedish language options
- ▶ A2.2 proficiency goal (CEFR)
- ▶ Five modules, continuous evaluation and feedback
- ▶ English used as support language
- ▶ Master's-level instructors experienced in teaching international students
- ▶ Nordic pedagogy: pedagogical quality, inclusion, active learning, and equality
- ▶ Orientation to online learning before studies in Finland or Sweden (in both countries, students are required to complete at least some part of their studies online)
- ▶ Preparation for B1–B2 progression and English-language university success
- ▶ Pathway to globally recognized higher education in Finland or Sweden
- ▶ Schedule adapted e.g., to Rwandan holidays and school periods



About the Organizer – Not a Bad Idea (NBI)



Not a Bad Idea Oy (NBI) is a Finnish education company specializing in language learning and intercultural communication.

With over 30 years of experience in teaching non-native speakers, NBI provides high-quality, research-based education using modern online methods and learner-centered pedagogy. Our programs are designed for international students preparing for higher education in Finland or Sweden.

We combine expert teaching, personalized guidance, and flexible digital tools to help learners succeed in Nordic academic environments. NBI's teachers are experienced language education professionals (Master's degree holders) with strong expertise in online, interactive learning.

Together, we make language learning a bridge to confidence, inclusion, and success in your future studies.

Contact

Program Organizer:
Not a Bad Idea (NBI)
Turku, Finland

info@notabadidea.fi | www.notabadidea.fi



info@notabadidea.fi | www.notabadidea.fi

